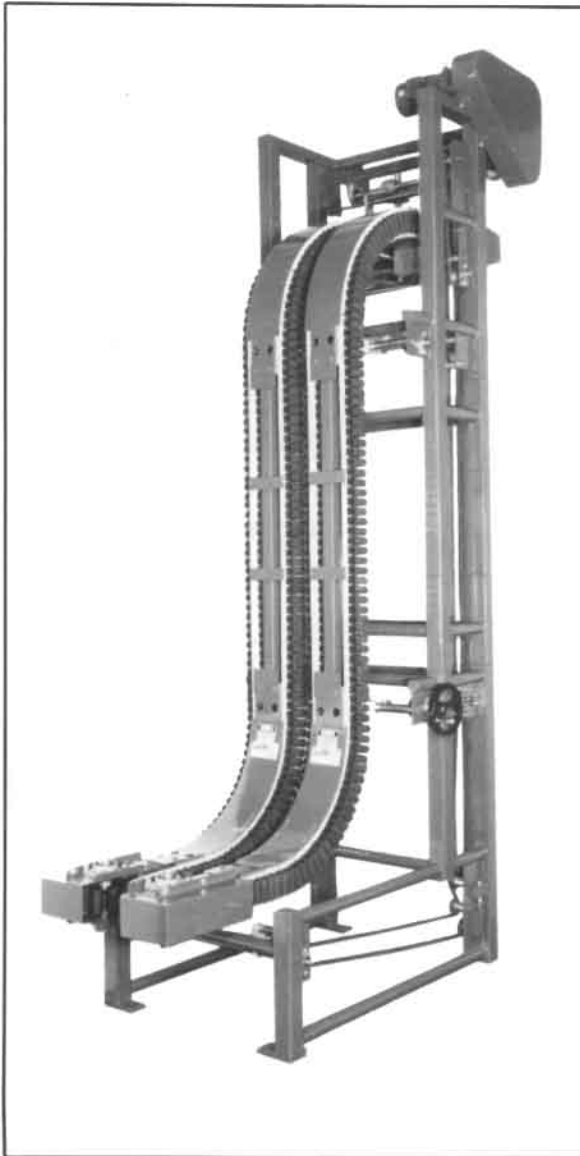


# Container Elevator/Lowerator

## Models CESG & CLSG Series



### DESCRIPTION

The CONTAINER ELEVATOR/LOWERATOR is a fully automatic unit that grips the container or other product gently but firmly and raises or lowers it vertically.

The containers are transported by soft rubber grippers, mounted on chain flights. All types of containers are firmly gripped, smoothly and without product damage, and with positive control of the containers at transfer points.

### APPLICATION

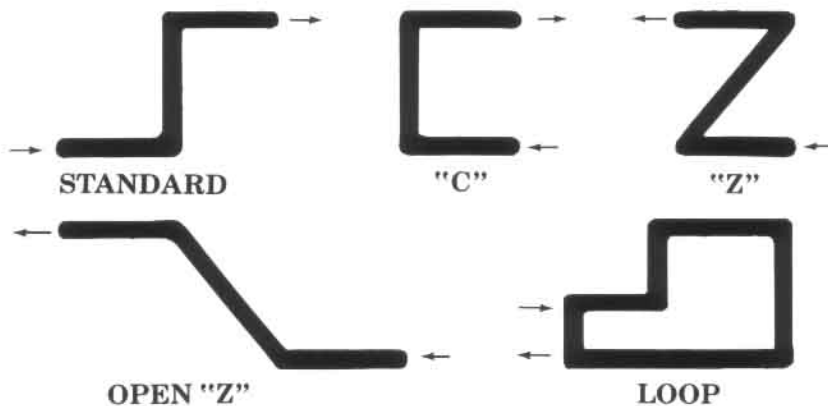
The CONTAINER ELEVATOR/LOWERATOR is designed to transport various bottles, jars, cans, boxes, and packages from one elevation to another. No change parts are required for various product types and sizes. The CONTAINER ELEVATOR/LOWERATOR is utilized for all types of multilevel operations in the beverage, liquor, food, chemical fields, and many other industrial applications for filled or empty containers.

### ADVANTAGES

- Elevates or lowers unstable or fragile products
- Maintains product orientation
- Applicable to split production lines
- Different configurations lends to a variety of applications
- Accommodates cooling, curing, and accumulation time



### CUSTOMIZED CONFIGURATIONS AVAILABLE



Bulletin 310895

DESIGN, ENGINEERING & ASSOCIATED MANUFACTURING COMPANY

### OPTIONS

- Stainless steel frame
- Soft start drive
- Infeed & discharge conveyors
- Electrical control panel
- High and low jam controls
- Powered gripper adjustment
- Motor and drive mounting location
- Centralized lube system
- Fixed tract for specific container size
- Hydraulic drive
- Vari drive
- \_\_\_\_\_
- \_\_\_\_\_

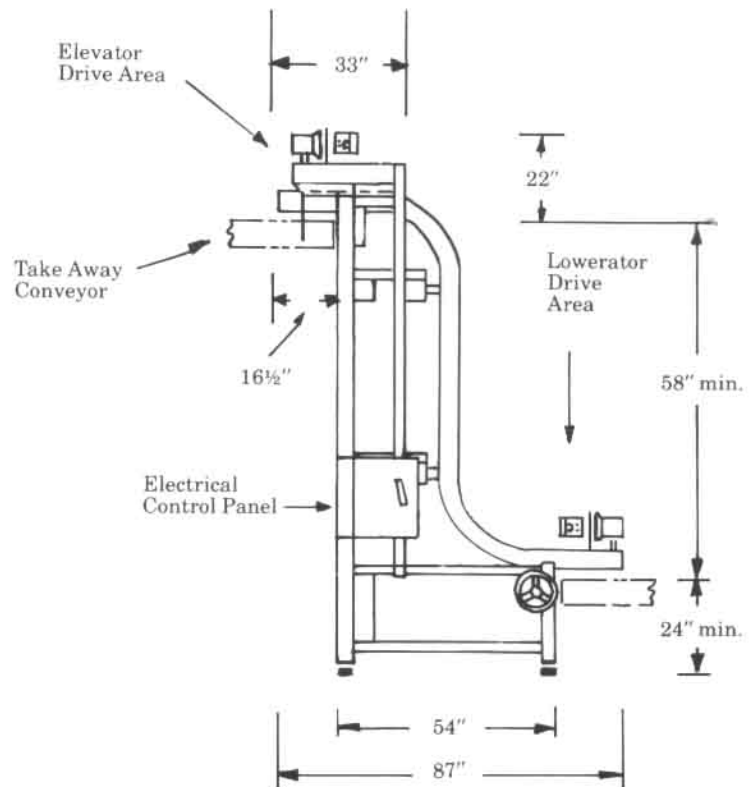
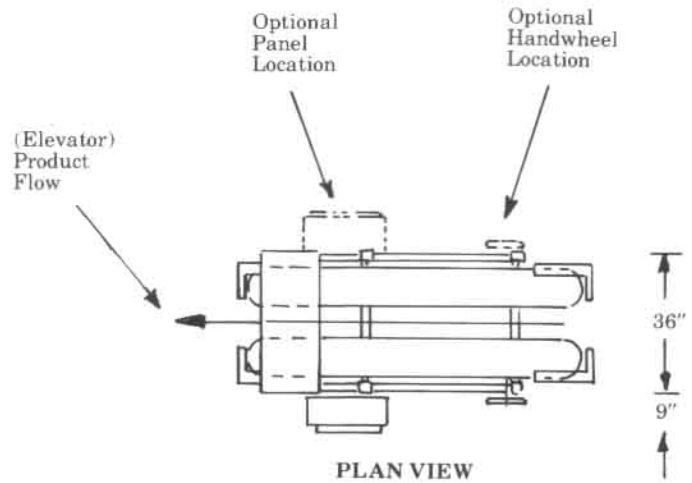
### ORDERING INFORMATION

If you wish a quote, please provide the following information

- Container sizes and materials
- Line speeds
- Conveyor interface descriptions
- Required elevations
- Drive and control cabinets locations
- Installation location and delivery specifications
- \_\_\_\_\_
- \_\_\_\_\_

### STANDARD FEATURES

- Tubular steel and painted frame
- Fully automatic operation
- Speeds in excess of 300 feet per minute if required
- No change parts required
- Simple handwheel adjustment up to 10" opening
- Constant speed drive
- Soft rubber grippers with plastic flights
- Adjustable legs
- Suitably guarded
- Torque limiter drive
- Electric drive
- \_\_\_\_\_



SIDE ELEVATION

NOTE: Specifications are subject to change without notice.

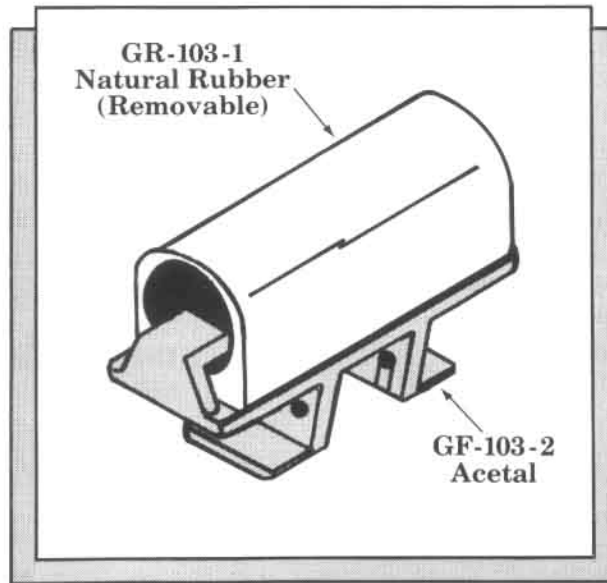
# Rubber Gripper And Acetal Flight

## LIGHTWEIGHT AND RELIABLE

No glues or screws required

■ Our gripper rubber is held firmly in place by specially designed "hooks" molded with the plastic base link.

■ If the rubber portion becomes damaged, simply unhook it from the link and replace it. (No glues or screws.)



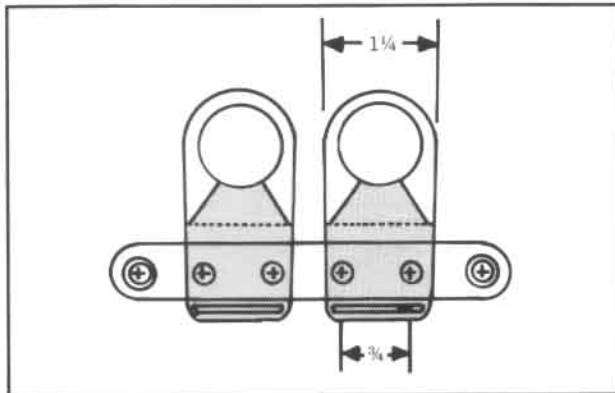
## FEATURES

- Reduces overall chain weight by 50% compared to metal style link, adding substantial life to the base chain.
- Saves money in energy consumption.
- Gives added life to drive components and wear parts.
- Damaged gripper rubber easily replaced.

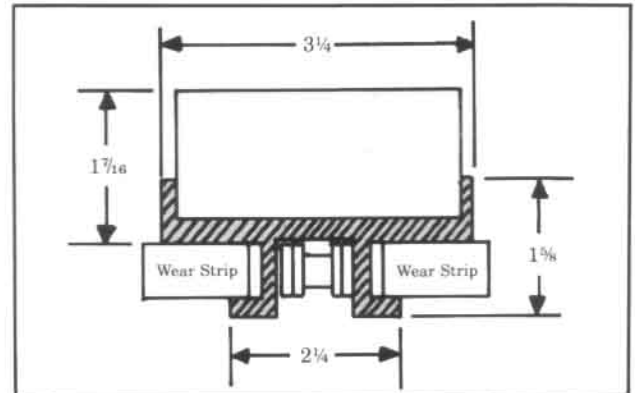
Side Contact Link to raise or lower containers in a single file

## DEAMCO GRIPPER LINK\*

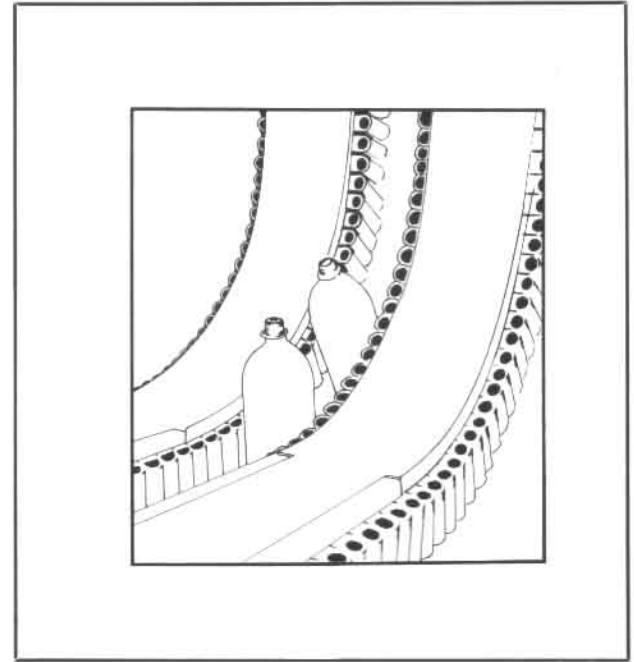
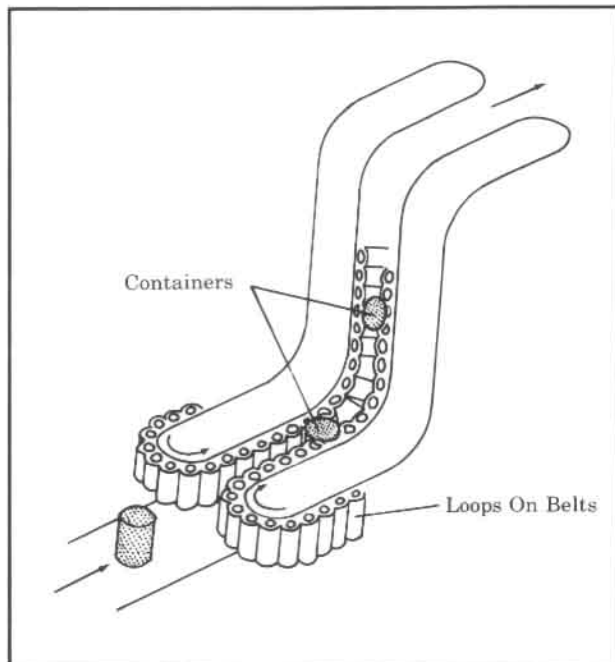
GR-103-1 GRIPPER RUBBER ■ GF-103-2 GRIPPER FLIGHT

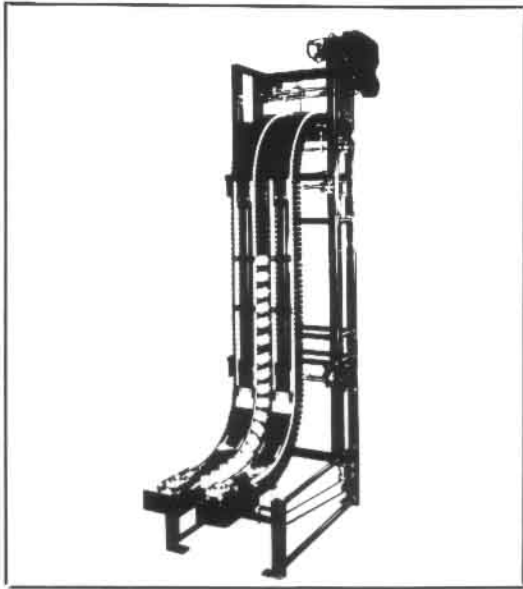


■ Use with Rexnord 63 or 63 S.S. Extended Pin Style Base Roller Chain.



■ Recommended as a reliable replacement for heavy metal style 1874 flight with glue or screw type rubber bonding.





**TYPICAL APPLICATIONS**

**OTHER PRODUCTS and SERVICES**

(Check for inquiry)

- Conveyors (different types)
- Depalletizers
- Coolers and warmers
- Combiners and dividers
- Accumulators
- Elevators and lowerators (bucket type)
- Case washers
- Container cleaners and rinsers (high speed)
- Twist fittings
- Layout assistance
- Special equipment development
- Installations
- Customized systems
- \_\_\_\_\_
- \_\_\_\_\_

