

DESCRIPTION

The Rinsing/Cleaner removes dust and debris from containers. The In-Line Rinsing/Cleaner is a low cost automatic grip type container cleaner. Accepting containers from standard conveyors, the system gently grips the containers individually and conveys them to an inverted position without container to container contact, rinses and/or air cleans away dust and debris and then returns containers to normal conveying position moving containers at speeds in excess of 300 feet per minute if required. (Higher speeds available.)

STANDARD FEATURES

- Tubular stainless steel open frame construction for sanitation and ease of maintenance
- Fully automatic operation
- Simple handwheel adjustment from 0" up to 10" opening
- No change parts required
- Soft rubber grippers
- Constant speed drive
- Adjustable legs
- Valve control for minimal water or air consumption
- Suitably guarded
- Torque limiter drive (safety clutch)
- _____
- _____

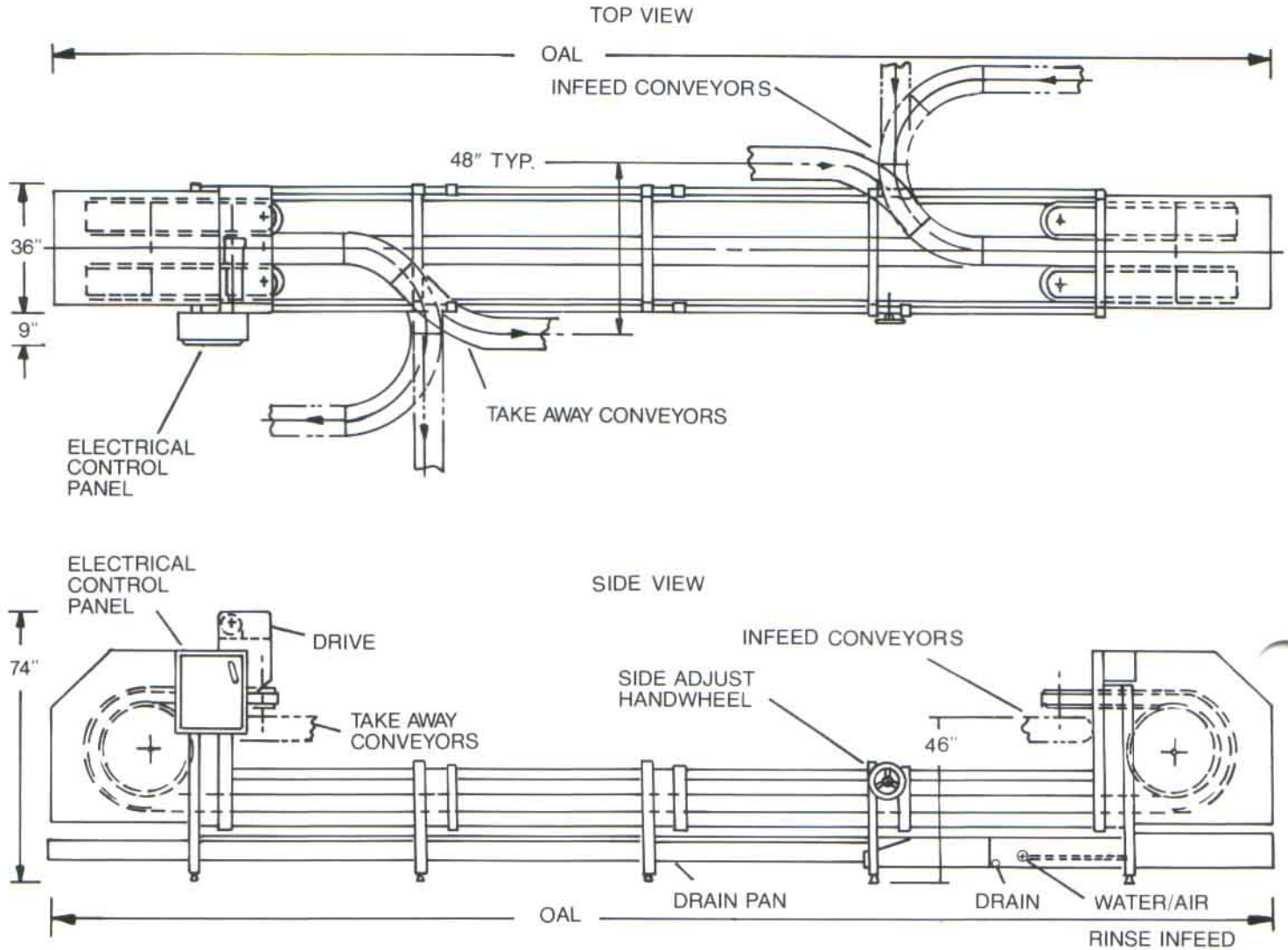
ADVANTAGES

- Fully automatic rinsing and/or air cleaning
- Delivers clean containers without slowing production
- All stainless steel construction meets food processing standards
- Open construction simplifies cleaning
- Able to handle glass, lightweight plastics, cans and a variety of other containers
- _____
- _____
- _____
- _____
- _____
- _____

HIGH SPEED RINSER/CLEANER

MODEL HSRC SERIES

SPECIFICATIONS AND DIMENSIONS



OPTIONS

- Mild steel frame
- Soft start drive
- Variable speed drive
- Infeed & discharge conveyors
- Electrical control panel & location
- High/low jam controls
- Powered gripper adjustment
- Central lube system
- _____
- _____

MODEL OAL DRAIN LENGTH

HSRC-17()	18'0"	9'3"
HSRC-22()	23'6"	14'7"
HSRC-27()	28'6"	19'11"

DRIVE

- (E) ELECTRIC
- (H) HYDRAULIC

ORDERING INFORMATION

If you wish a quote, please provide the following information:

- Container size and material
- Line speed
- Conveyor interface description
- Required elevations
- Drive (electric or hydraulic)
- Drive and control cabinet locations
- Installation location and delivery specifications
- _____
- _____
- _____

NOTE: Specifications are subject to change without notice.

DESIGN, ENGINEERING & ASSOCIATED MANUFACTURING COMPANY

6520 East Washington Blvd., City of Commerce, CA 90040 • Phone: (213) 890-1190 • FAX: (213) 890-1139

Rubber Gripper And Acetal Flight

LIGHTWEIGHT AND RELIABLE

No glues or screws required

■ Our gripper rubber is held firmly in place by specially designed "hooks" molded with the plastic base link.

■ If the rubber portion becomes damaged, simply unhook it from the link and replace it. (No glues or screws.)



FEATURES

■ Reduces overall chain weight by 50% compared to metal style link, adding substantial life to the base chain.

■ Saves money in energy consumption.

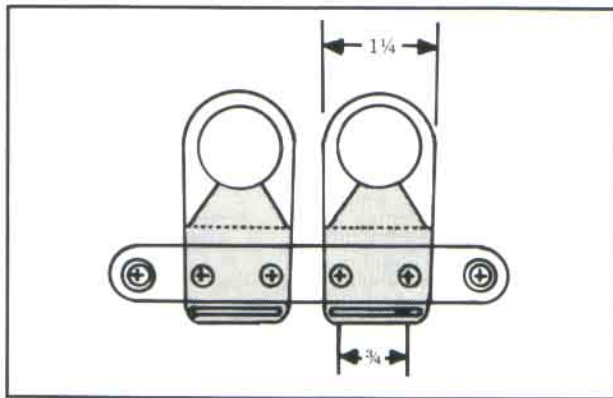
■ Gives added life to drive components and wear parts.

■ Damaged gripper rubber easily replaced.

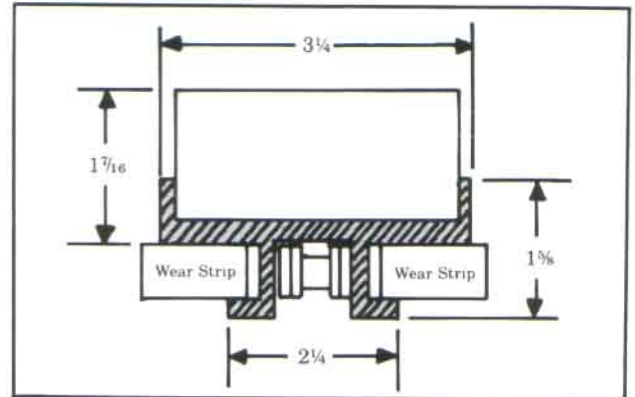
Side Contact Link to raise or lower containers in a single file

DEAMCO GRIPPER LINK*

GR-103-1 GRIPPER RUBBER ■ GF-103-2 GRIPPER FLIGHT



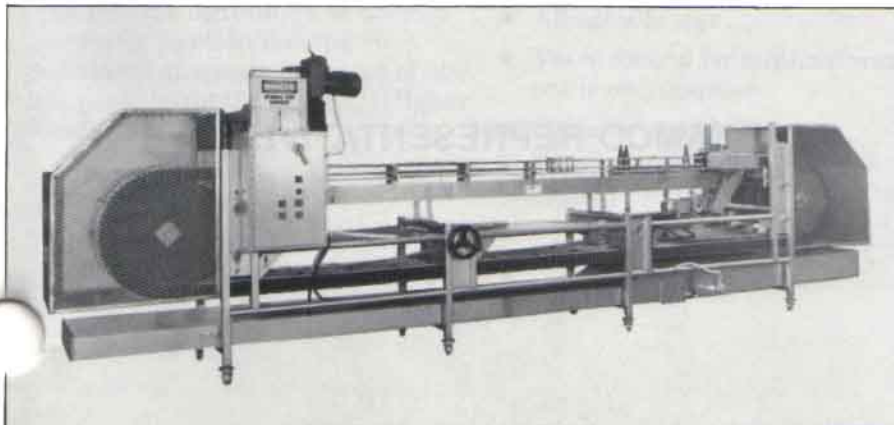
■ Use with Rexnord 63 or 63 S.S. Extended Pin Style Base Roller Chain.



■ Recommended as a reliable replacement for heavy metal style 1874 flight with glue or screw type rubber bonding.

*Patent Pending

Portable Unit

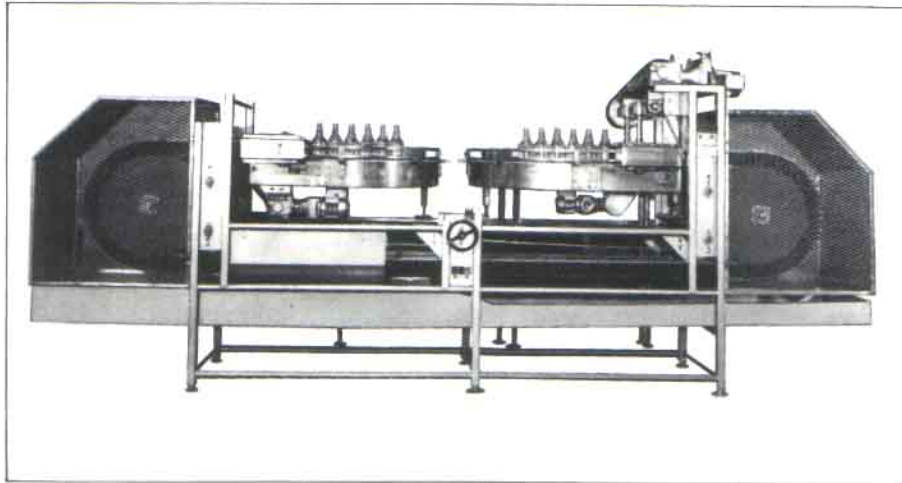


ILLUSTRATED: Compressible rubber grippers softly touch each container separately for gentle and swift handling.

DESIGN, ENGINEERING & ASSOCIATED MANUFACTURING COMPANY

6520 East Washington Blvd., City of Commerce, CA 90040 • Phone: (213) 890-1190 • FAX: (213) 890-1139

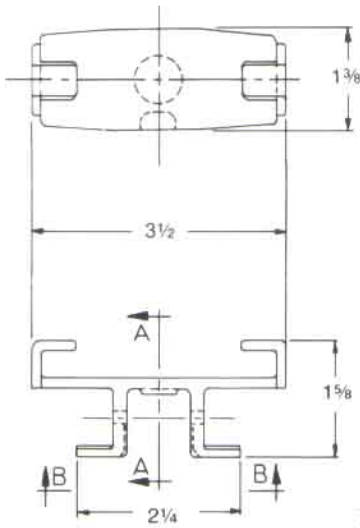
TYPICAL APPLICATIONS



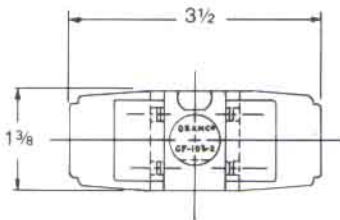
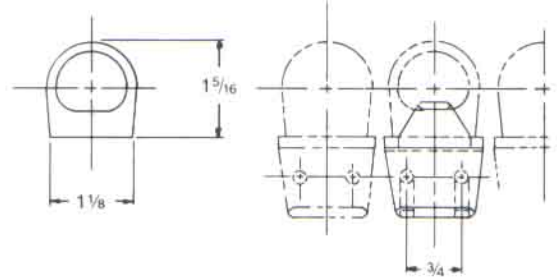
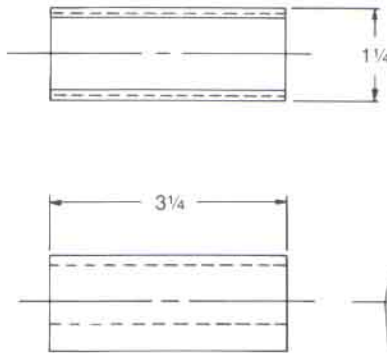
**GRIPPER FLIGHT
GF-103-2**

**GRIPPER RUBBER
GR-103-1**

**TYPICAL
ASSEMBLY**



SECTION A-A



VIEW B-B

DEAMCO REPRESENTATIVE

DESIGN, ENGINEERING & ASSOCIATED MANUFACTURING COMPANY

6520 East Washington Blvd., City of Commerce, CA 90040 • Phone: (213) 890-1190 • FAX: (213) 890-1139