



STORE-A-VEYOR SAV and SAV-T Series

Automatic Storage and Conveying System Filling the Gap Between Processing and Packaging

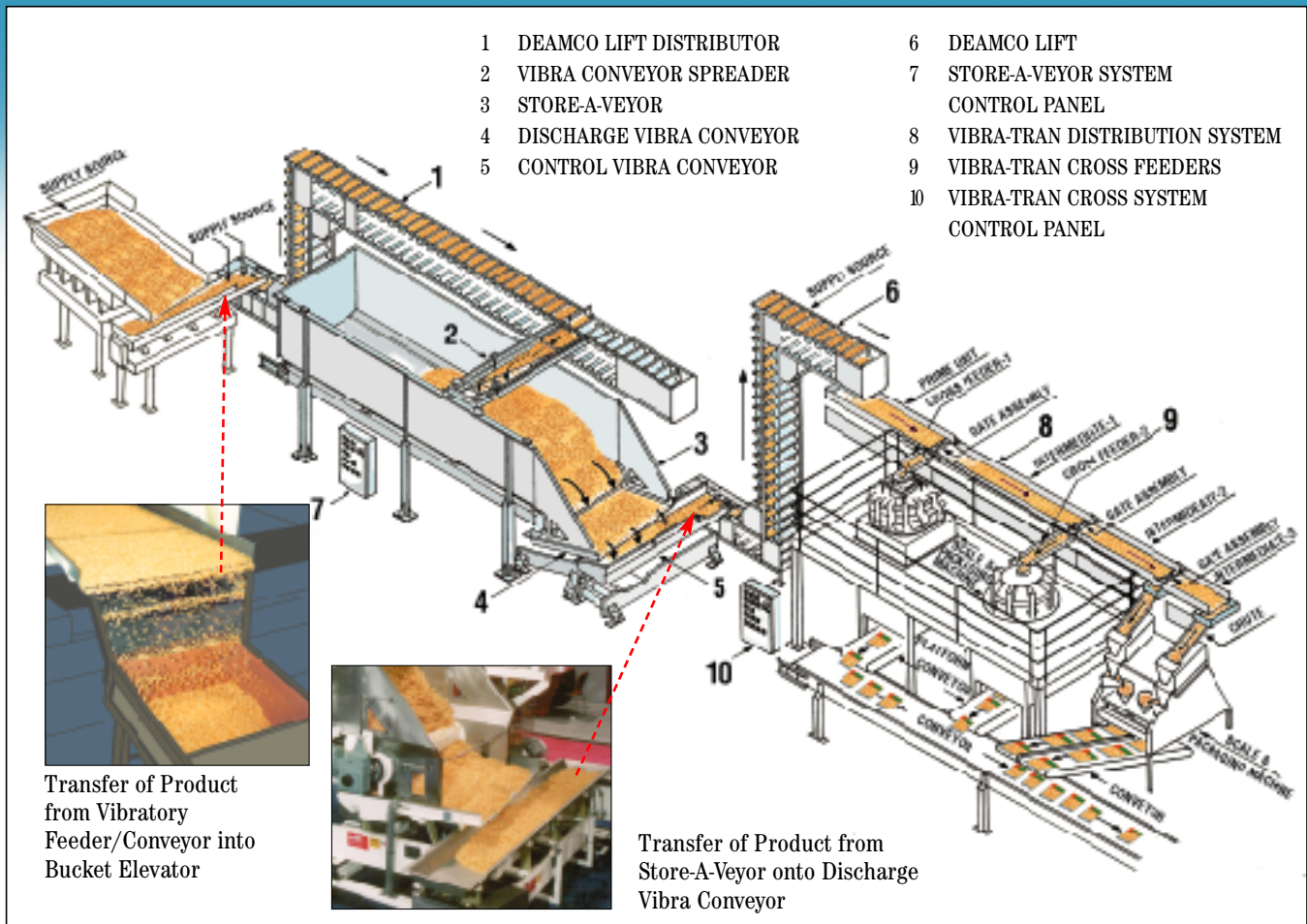


Illustration: SAV-T Automated Storage and Distribution System shown.

Description

A fully automated storage, conveyance and discharge system on a first in - first out basis for free, semi-free and non-free flowing or fragile products such as: chips, cookies, cereals, crackers, bread stuffing, noodles, irregular shapes and other. The Store-A-Veyor Systems are a solution to synchronizing continuous flow of product from processing to continuous and/or intermittent demand from packaging system requirements.

Application

The Store-A-Veyor is an automatic Storing and Conveyance System that accepts product at varying rates and discharges it on demand. The system's function is to receive product continuously and/or intermittently from processing and discharge continuously and/or intermittently upon demand from packaging machines or other requirements. The product is automatically stored in the Store-A-Veyor with no labor requirements until the Store-A-Veyor is completely filled. The product is withdrawn automatically on demand from packaging machines, processing equipment or other requirements.

Advantages

Handling products through the Store-A-Veyor reduces damage and degradation while meeting the automated needs of the packaging process.

DESIGN, ENGINEERING & ASSOCIATED MANUFACTURING COMPANY

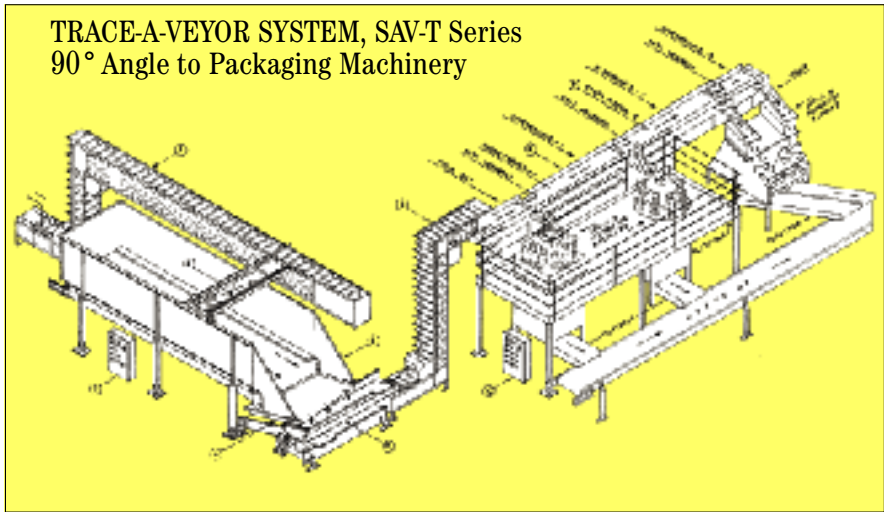
6520 East Washington Blvd., City of Commerce, CA 90040-1822

Toll free (800) 933-2620 or (888) 933-2620 • Phone (323) 890-1190 • Fax (323) 890-1139 • www.deamco.com • email: deamco@deamco.com



The Store-A-Veyor is available in two basic models: MODEL SAV-Store-A-Veyor is for storing and discharging product after it is filled (First in-First out). MODEL SAV-T-Store-A-Veyor with Tracer unit is for accepting and withdrawing product at the same time (First in-First out).

Available in floor mounted or ceiling hung. Storage Capacities - 500 to 70,000 pounds or more depending on product.



STORE-A-VEYOR MODELS SAV

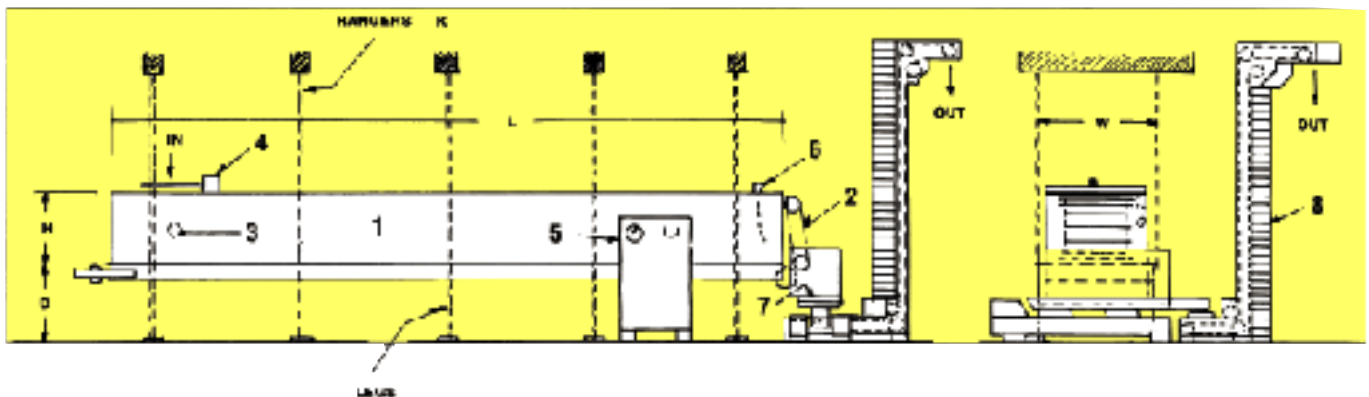
MODEL	CAPACITY CL.FT.	WIDTH W'	HEIGHT H'	LENGTH L'	D or K	SHIP WEIGHT LBS.	ADDED LIN. FT. LBS.	
SAV-4-3-20	240	4	3	20	AS REQUIRED	3500	140	
SAV-4-4-20	320	4	4	20		3900	150	
SAV-4-5-20	400	4	5	20		4200	170	
SAV-5-3-20	300	5	3	20		3800	150	
SAV-5-4-20	400	5	4	20		4200	170	
SAV-5-5-20	500	5	5	20		4500	190	
SAV-6-3-20	360	6	3	20		4400	180	
SAV-6-4-20	480	6	4	20		4800	200	
SAV-6-5-20	600	6	5	20		5200	220	
SAV-8-4-20	584	8	4	20		Refer to factory		
SAV-10-4-20	590	10	4	20				
SAV-12-5-20	1020	12	5	20				

System includes: Motor, Vari-drive and controls.

Other sizes and configurations available.

Dimensions shown are in imperial (inches).

MODELS SAV



- 1 STORE-A-VEYOR UNIT
- 2 DRAPER UNIT
- 3 PRODUCT LEVEL CONTROLLER

- 4 MECHANICAL SPREADER
- 5 CONTROL PANEL
- 6 SAV FULL CONTROL

- 7 CONTROL VIBRATOR
- 8 DEAMCO BUCKET ELEVATOR

DIMENSIONS D, H, L, & W AS REQUIRED



STANDARDS

- FRAME** Mild steel construction with food grade grade paint.
- SUPPORTS** Mild steel channel, Tubular or Ceiling Hangers with food grade paint.
- SIDE WALLS** Mild steel construction with food grade paint.
- BEARINGS** Sealed self-aligning ball bearings.
- PULLEY** Steel, Rubberized, self-aligning.
- BELT** Neoprene Top.
- DRIVE** Fixed speed, gear reduction, electrical 240/480 Volts A.C., 3 Phase, 60 Hertz.

_____ : _____
 _____ : _____

OPTIONS

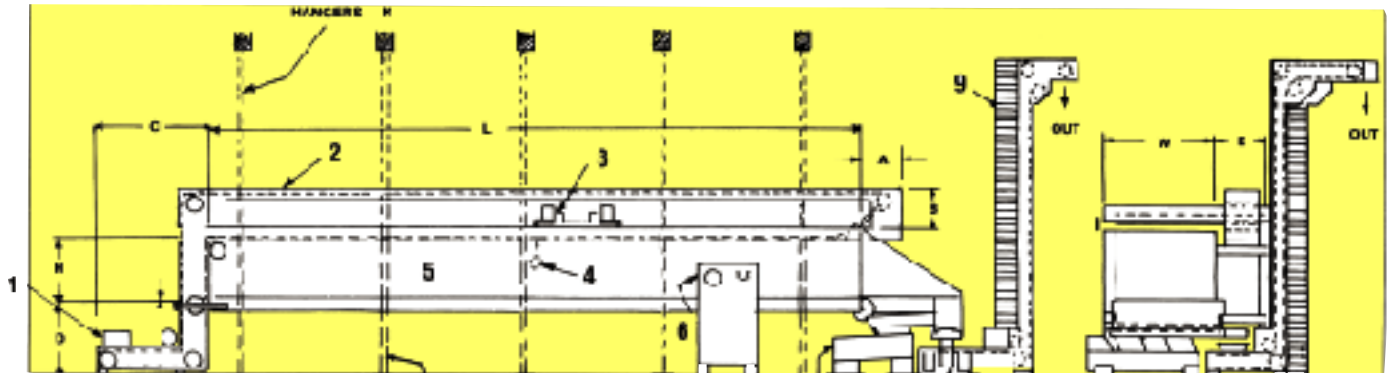
- FRAME** Stainless Steel, Stainless Steel/Mild Steel combination, all aluminum and others.
- SUPPORT** Stainless Steel, Stainless Steel/Mild Steel combination, Channel, Tubular or Ceiling Hangers, all aluminum or others.
- SIDE WALLS** Stainless Steel, Stainless Steel/Mild Steel combination and others.
- BEARINGS** Plated or others.
- PULLEY** Stainless Steel, Mild steel, aluminum or other rubber covered pulleys.
- BELT** All neoprene, mesh top steel, stainless steel or plastic, Intralox® or other equivalent type belting.
- DRIVE** Variety of motor and drive combinations based on applicable requirements.

STORE-A-VEYOR MODELS SAV-T

MODEL	CAPACITY CU.FT.	WIDTH W'	HEIGHT H'	LENGTH L'	D OR K	SHIP WEIGHT LBS.	ADDED LIN. FT. LBS.	WITH HOOK-UP DISTRIBUTOR BES BEM	BEH
SAV-T-4-3-20	210	4	3	20	AS REQUIRED	3600	140	C42'	90"
SAV-T-4-4-20	320	4	4	20		3900	160	A42'	60"
SAV-T-4-5-20	400	4	5	20		4200	170	E22'	27 1/4"
SAV-T-5-3-20	300	5	3	20		3800	150	E as required	
SAV-T-5-4-20	400	5	4	20		4200	170		
SAV-T-5-5-20	500	5	5	20		4500	190		
SAV-T-6-3-20	360	6	3	20		4400	180		
SAV-T-6-4-20	480	6	4	20		4800	200		
SAV-T-6-5-20	600	6	5	20		5200	220		
SAV-T-8-4-20	534	8	4	20		Refer to factory			
SAV-T-10-4-20	580	10	4	20					
SAV-T-12-5-20	1020	12	5	20					

System includes: Motor, Vari-drive and controls. • Other sizes and configurations available. • Dimensions shown are in imperial (inches).

MODELS SAV-T



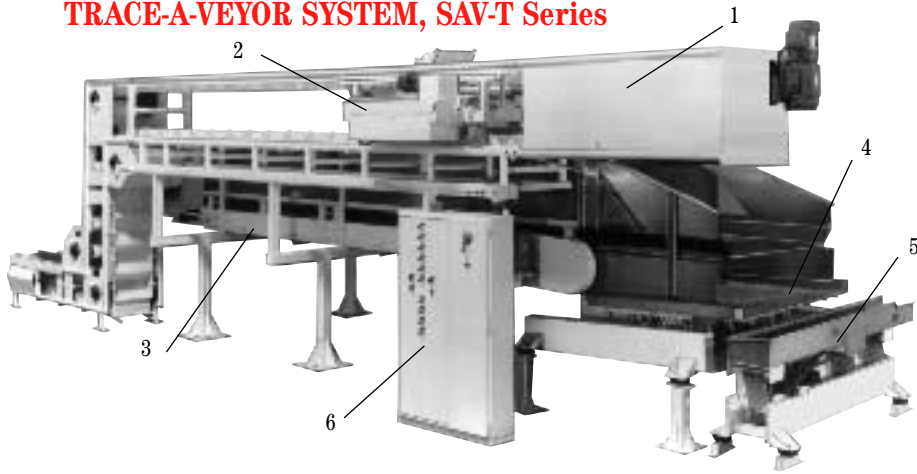
- | | | |
|--------------------------------|--------------------------------|---|
| 1 INFEED HOPPER | 4 LEVEL DETECTOR & PEAK TRACER | 7 DISCHARGE INCLINE VIBRATOR |
| 2 DISTRIBUTING BUCKET CONVEYOR | 5 STORE-A-VEYOR UNIT | 8 CONTROL VIBRATOR AND PRODUCT LEVEL CONTROLS |
| 3 TRAVELING VIBRATORY SPREADER | 6 TRACER PROGRAMMER & CONTROLS | 9 DEAMCO BUCKET ELEVATOR |



STORE-A-VEYOR SAV-T SERIES SYSTEMS INFEED TRACER OPTIONS

Options are available to feed the STORE-A-VEYOR System (SAV-T) to assure uniform fill on a first-in-first-out basis. These options are dependent on the type of product and available space. Infeed equipment utilizes belt conveyors, bucket distributors or vibratory conveyors. Some of the systems can be mounted directly over the Store-A-Veyor (SAV-T).

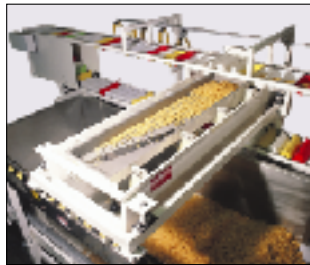
TRACE-A-VEYOR SYSTEM, SAV-T Series



- 1 - Bucket Distributor/Conveyor (BEH or BES Series)
- 2 - Traveling Vibra Spreader TVS (VCNF Series)
- 3 - STORE-A-VEYOR SAV-T (Series)
- 4 - Discharge Incline Vibra Conveyor/Feeder DIV (VCNF Series)
- 5 - Control Vibratory Conveyor Feeder CVC (VCNF Series)
- 6 - Complete Control Panel for Automated Operation



BUCKET DISTRIBUTOR



TRAVELING SPREADER



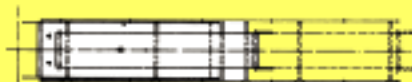
STORE-A-VEYOR



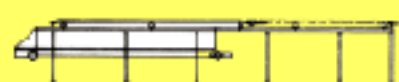
VIBRATORY FEEDER

Traveling Belt or Vibra Conveyor on a traveling shuttle over the Store-A-Veyor (SAV-T) provides uniform spread across the SAV-T. This system requires room for the belt or Vibra Conveyor to retract.

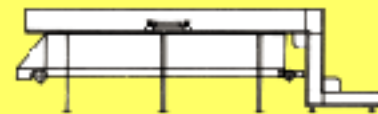
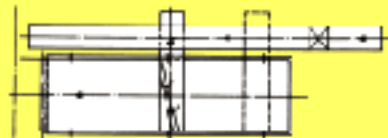
Plan View



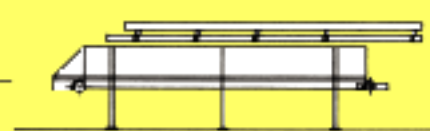
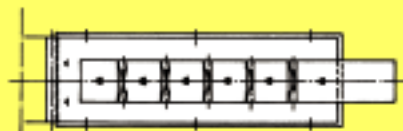
Elevation



Loop Bucket Distributor with Traveling Vibrator Spreader. This is the preferred system as it can elevate the product and provide gentle handling. The spreader provides the optimum distribution across the cavity.



Stationary Vibra Conveyor. A fixed vibratory conveyor with a series of gates fills the Store-A-Veyor (SAV-T) as the gates open sequentially. The fill of the SAV-T depends on gate spacing and width of the vibra conveyor.



DESIGN, ENGINEERING & ASSOCIATED MANUFACTURING COMPANY

6520 East Washington Blvd., City of Commerce, CA 90040-1822

Toll free (800) 933-2620 or (888) 933-2620 • Phone (323) 890-1190 • Fax (323) 890-1139

www.deamco.com • email: deamco@deamco.com

INTERNATIONAL

DEAMCO CORP. LTD., 829 Yeovil Road, Trading Estate, Slough, Berks, England, SL1 4JA

Phone 01753533513 • Fax 0175353314

STURTON-GILL ENGINEERING, 7 Holloway Drive, Baywater, Victoria, Australia, 3153

Phone 011-61-3-9762-8800 • Fax 011-61-3-9762-8287

