



STORAGE BINS SINGLE USE OR COMPLETELY AUTOMATED SYSTEMS SB SERIES



DUAL STORAGE BIN (CENTER DIVIDER)

DESCRIPTION

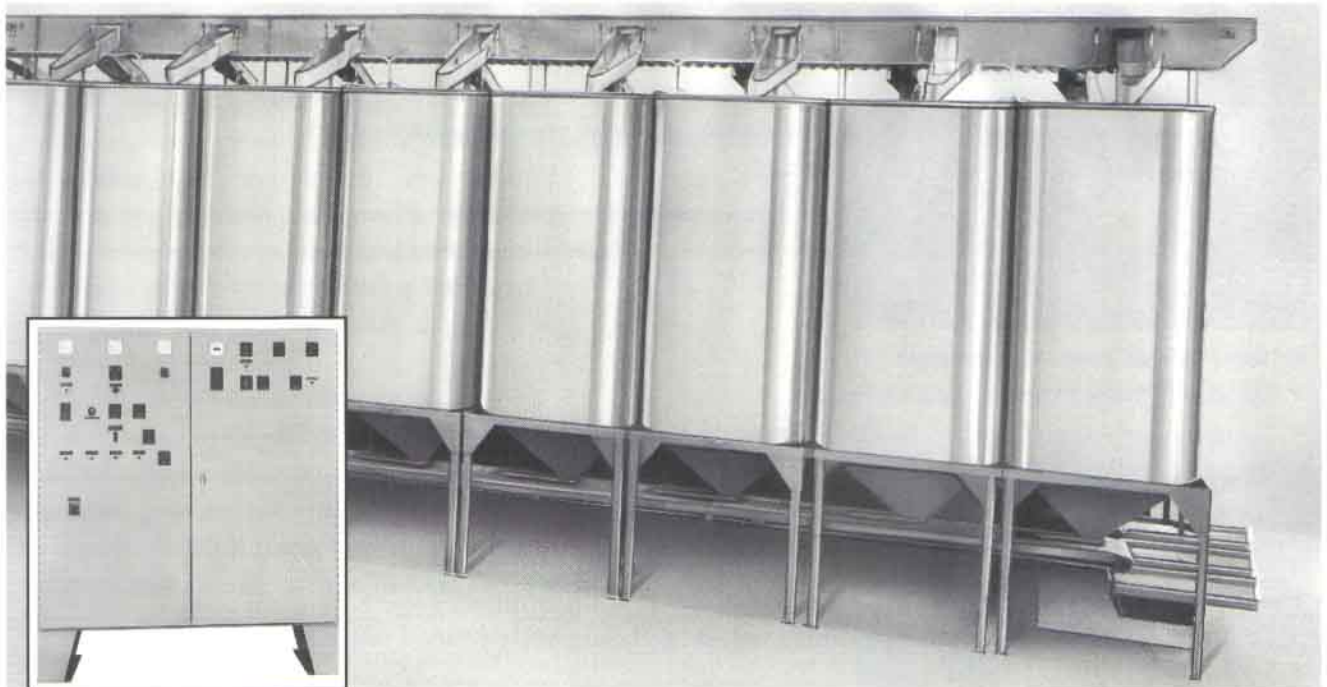
Single or fully automated Bin Storage Systems are designed to handle and store free flow dry products. Its inherent features along with optional equipment allows for complete automation and gentle handling of products during infeed, storage and discharge periods.

Storage Bins are ruggedly constructed from mild steel material with a cross section of widths and heights to suit a variety of storage needs. Units are also available in a variety of other materials such as stainless steel, aluminum, steel with coated plastic and other customized configurations and materials.

APPLICATION

Storage Bins are used to store dry, free flow products and can be filled automatically or manually. Application may be for single usage or totally automated system meeting the intended usages.

Product is discharged on demand by means of flow through bottom discharge openings on take away conveyors (belt conveyors, vibratory conveyors or others) to its destination.



CLUSTER UNIT Control panels available for automatic discharge gates, inlets and for a variety of other requirements.

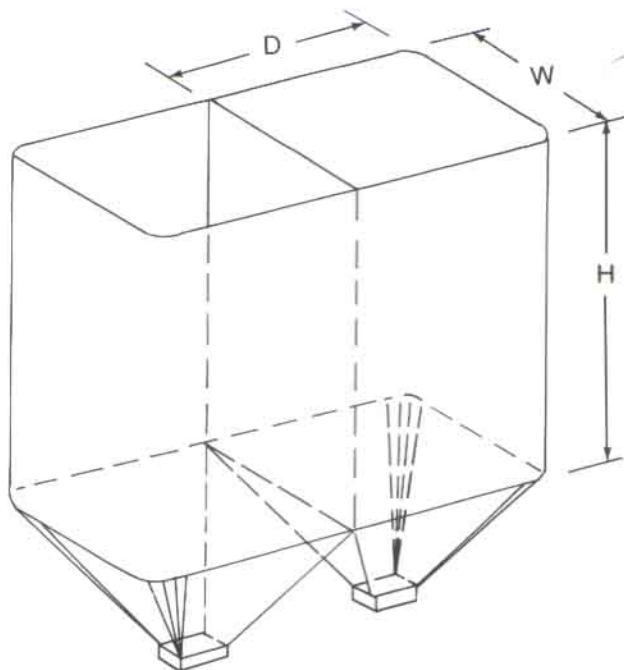
DESIGN, ENGINEERING & ASSOCIATED MANUFACTURING COMPANY

6520 East Washington Blvd., City of Commerce, CA 90040-1822 • Phone (323) 890-1190 • Fax (323) 890-1139

DIMENSIONS AND SPECIFICATIONS

Bin Size Ft.	Capacity Cu. Ft.	W	D	H*	Weight Lbs.	Addl. Height Lbs.
3x4x6	72	3	4	6	750	85
3x5x6	90	3	5	6	850	95
3x6x6	108	3	6	6	900	105
4x4x6	96	4	4	6	850	95
4x5x6	120	4	5	6	900	105
4x6x6	144	4	6	6	1000	120
5x5x6	150	5	5	6	1000	120
5½x5x6	160	5½	5	6	1020	130
5x6x6	180	5	6	6	1050	140

*Can be impressed as required.



ADVANTAGES/FEATURES

BINS

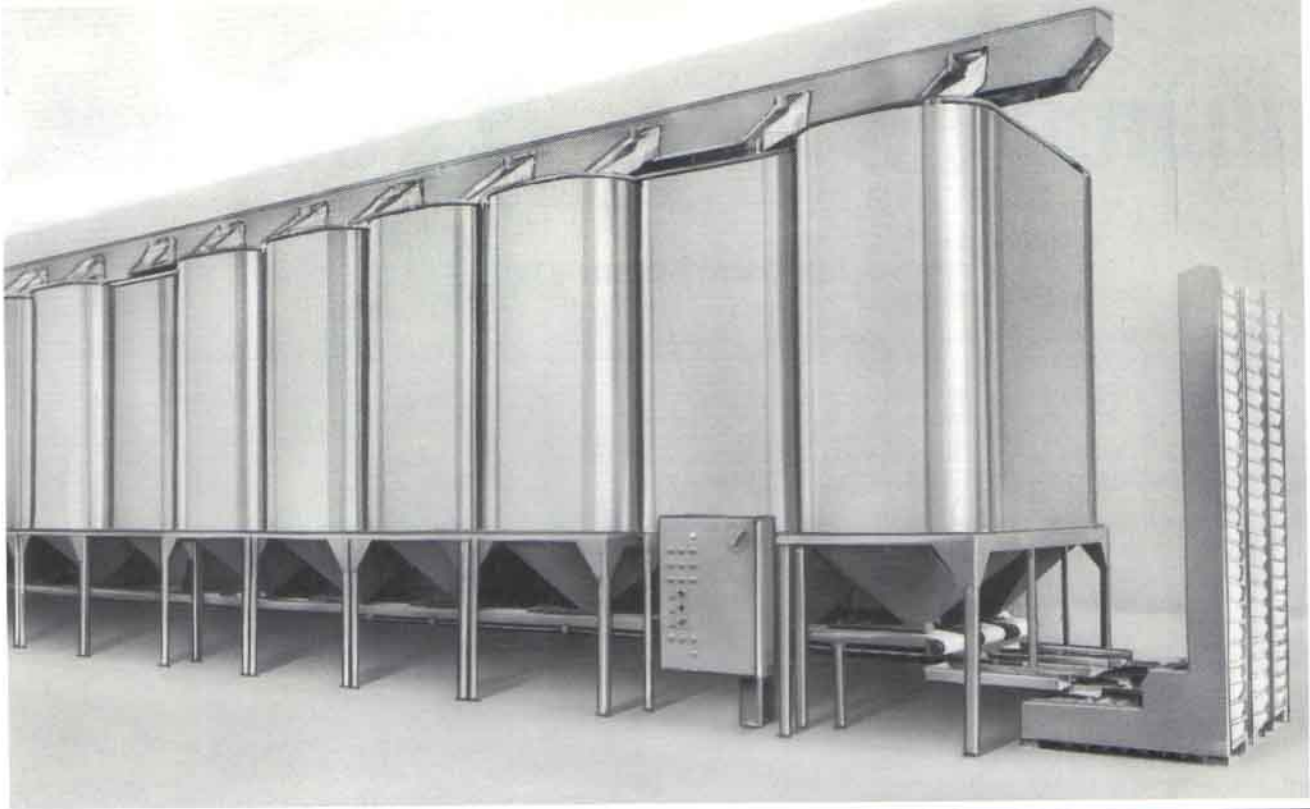
- Ruggedly constructed from mild steel materials for longevity and painted.
- Elliptical ends and corners for easy cleaning.
- Cone bottom discharge for ease of product flow.
- Available in pairs with center dividers for multi-use application.
- Eliminates bottle necking between product and packaging by its automated surge storage features.
- Eliminates portable system.
- Saves valuable floor space.
- Prevents loss of time during packaging by continual flow of product upon demand.
- Providing first in — first out flow of product.

FRAME

- Steel welded frame construction.
- Welded or bolted support and foot pads.
- Required gussets and bracing, designed to meet a variety of sizes and weight supports.

PAINT

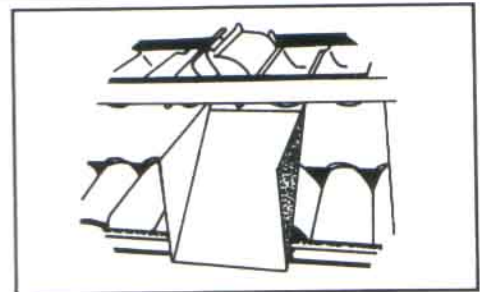
- Professionally primed and enamel painted outside and completely cleaned inside.



Clustered storage bins to form an automated storage system.

OPTIONS

- Stainless Steel bin construction (product contact area) with painted mild steel frame and supports.
- Complete stainless steel bins, frame and support construction.
- Aluminum bin construction (product contact area) with painted mild steel support.
- Complete aluminum bins, frame and support construction.
- Continuous weld bin construction.
- Continuous weld frame and support construction.
- Bolt on type (K/D) construction.
- Spiral lowerator chutes for gentle handling of products (mild steel or stainless steel construction).
- Start chutes to spirals (mild steel or stainless steel construction).
- Lucite covered port on sides and bottom cone area.
- Discharge gates with self cleaning features:
 - Manually operated slide gates.
 - Pneumatic slide gate.
 - Electric motor driven slide gates.
- Fill or empty bin signal systems.
- Fill or empty bin indicating lights.
- Complete pneumatic control panel.
- Complete electrical control panel.
- Infeed and discharge systems (bucket elevator, belt conveyors, vibratory conveyors and others).
- Other paint and metal treatments available.
- _____
- _____



Side discharge bucket conveyor with slide chute, delivers product to spiral and bin as selected.

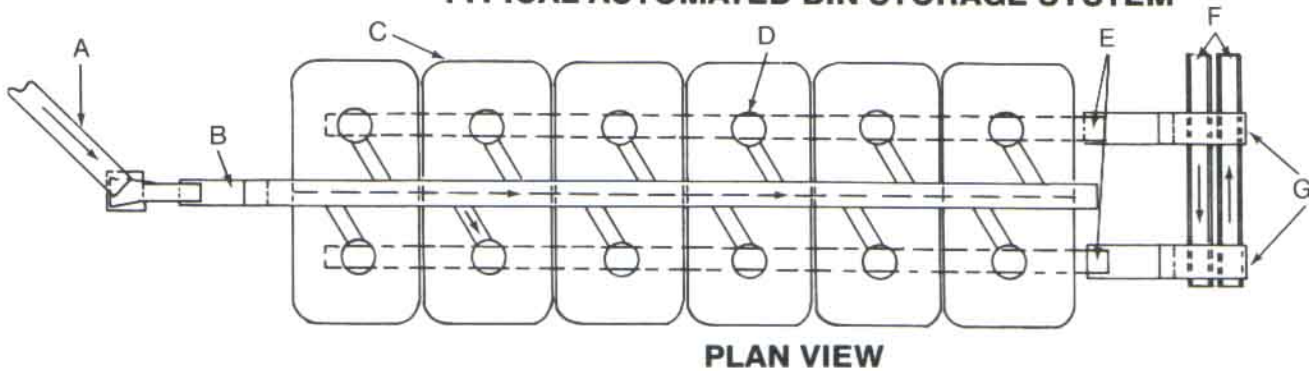


Spiral lowerator chute for each storage bin gently lowers product to bottom of the bin.

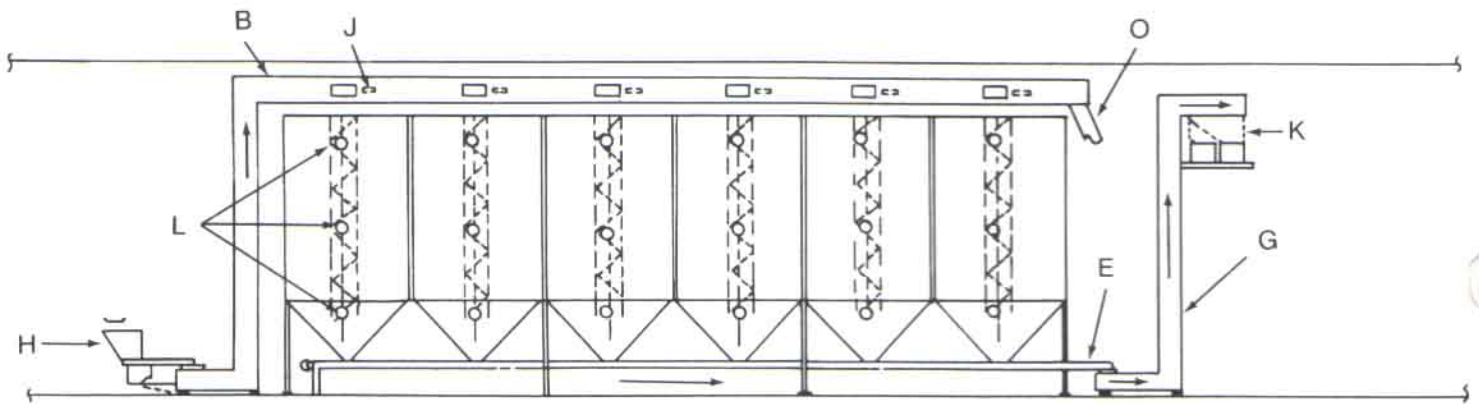


Withdrawal system from storage bins, belt conveyors, vibratory conveyors and bucket elevators shown.

TYPICAL AUTOMATED BIN STORAGE SYSTEM

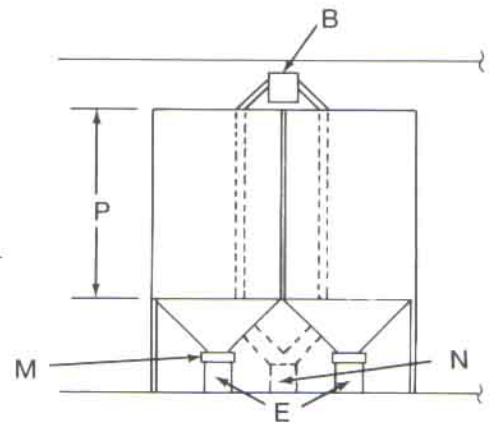


PLAN VIEW



SIDE ELEVATION VIEW

- A - Conveyor from supply source
- B - Deamco Elevator/Conveyor Bucket SIDE DISCHARGES
- C - Storage Bins Oval Type - Pairs of two - 12 bin arrangement
- D - Starter and Spirals
- E - Under Bin Conveyors to Item 'G' (2)
- F - Delivery Conveyors from Item 'G' to packaging units
- G - Deamco Bucket Elevators (2)
- H - Surge Hopper & Feeder (optional when required)
- I - _____
- J - Side Discharge CAM & Control
- K - By Pass Gate — to direct flow from Item 'G' to 'F'
- L - Inspection Ports — (3) per bin
- M - Air Controlled Slide Gates — one per bin
- N - Added Bin outlet and Conveyor when feeding (3) packing lines
- O - Scrap Outlet — piped to floor



END ELEVATION VIEW